



# MOVE AROUND THE WORLD

International Projects  
EXPRESS KÜCHEN

**EXPRESS**<sup>®</sup>  
KÜCHEN

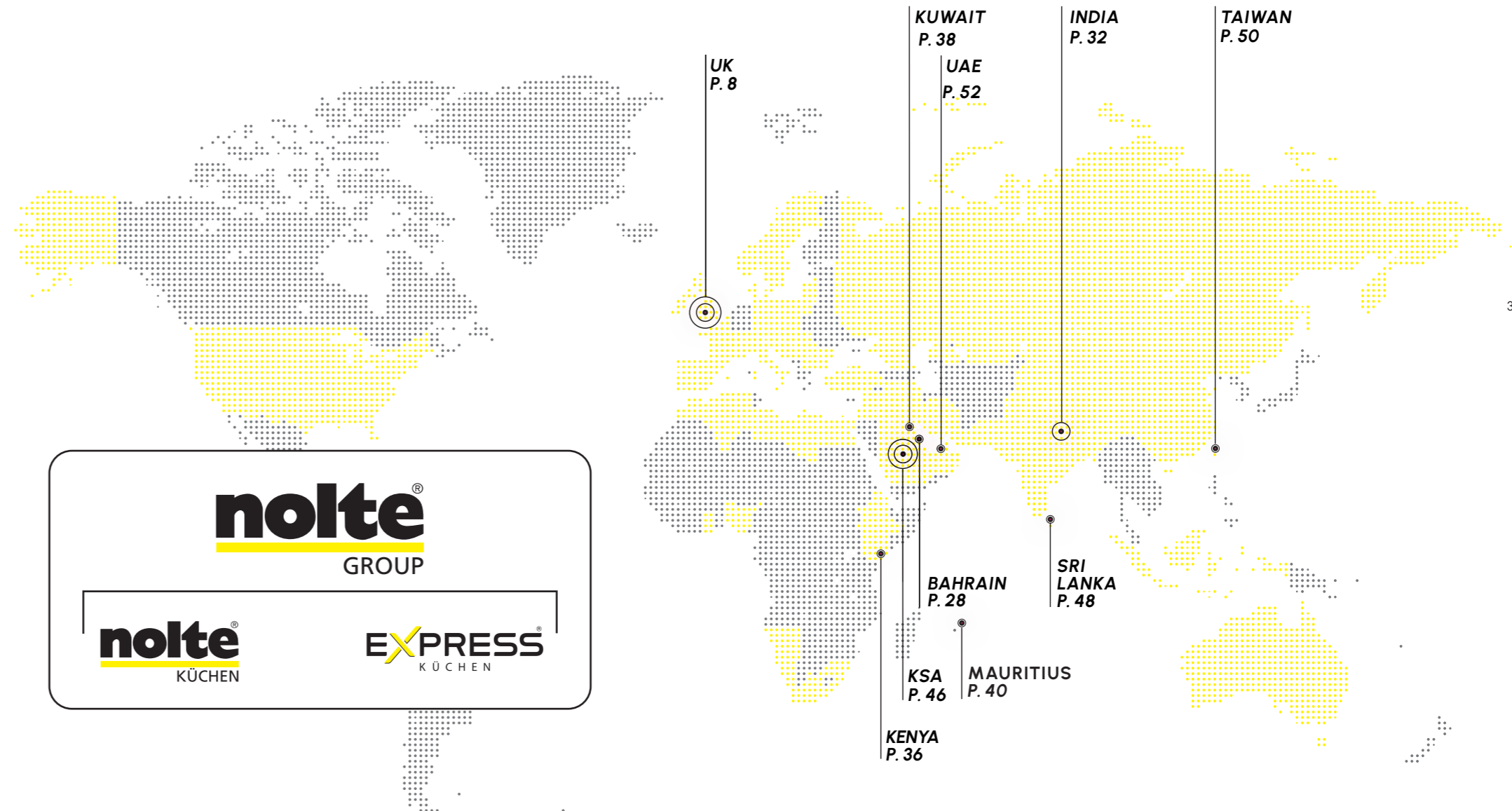


# WELCOME TO THE WORLD OF EXPRESS KÜCHEN

Modern and passionate – this describes not only our company and the way we work, but also our diverse range of kitchens. On the following pages, you will discover a wide selection of designs that will inspire you, combined with quality that will truly convince you. At Express Küchen, “Made in Germany” stands for more than just a label – it is our promise of quality. Modern design and straightforward planning are at the heart of what we do. With our System 15 planning grid, you can design your own fitted kitchen in just a few simple steps. As part of the nolte Group, we at

Express Küchen manufacture 100% in Germany. This allows us to offer a high level of safety and reliability in terms of quality. Around 3,000 people are employed under the umbrella of nolte Holding. Based in Melle, we have been producing kitchens for the attractive lower price segment since 2010. Our eight front ranges offer surfaces from matt to high gloss and a wide variety of contemporary décors – all with an excellent price-performance ratio. The nolte Group recognised early on that furniture “Made in Germany” can only succeed worldwide through outstand-

ing design and top quality. The company has consistently focused on these values and has become more and more successful year after year – across the globe. Now managed by the fourth generation of the founding family, the nolte Group makes strategic, long-term investments – even against the general economic cycle – to stay well positioned for the future in a globalised world. The Group continuously brings innovative ideas to the market and manufactures all products in an environmentally friendly and sustainable way, using the latest technologies.



# Our promise



## Quality you can see and feel.

For us, quality means intelligent functions, durable materials and careful craftsmanship – reliability “Made in Germany”. With state-of-the-art production processes and precision manufacturing, we create kitchens that not only look good, but also accompany you reliably through your everyday life for a long time to come.



## Expertise that you can rely on.

State-of-the-art production facilities, precision processes and the expertise of our trained craft-people ensure a reliably high level of quality. This combination creates well-considered kitchen solutions that are easy to assemble and are resoundingly impressive in everyday use.



## Design freedom almost too good to be true

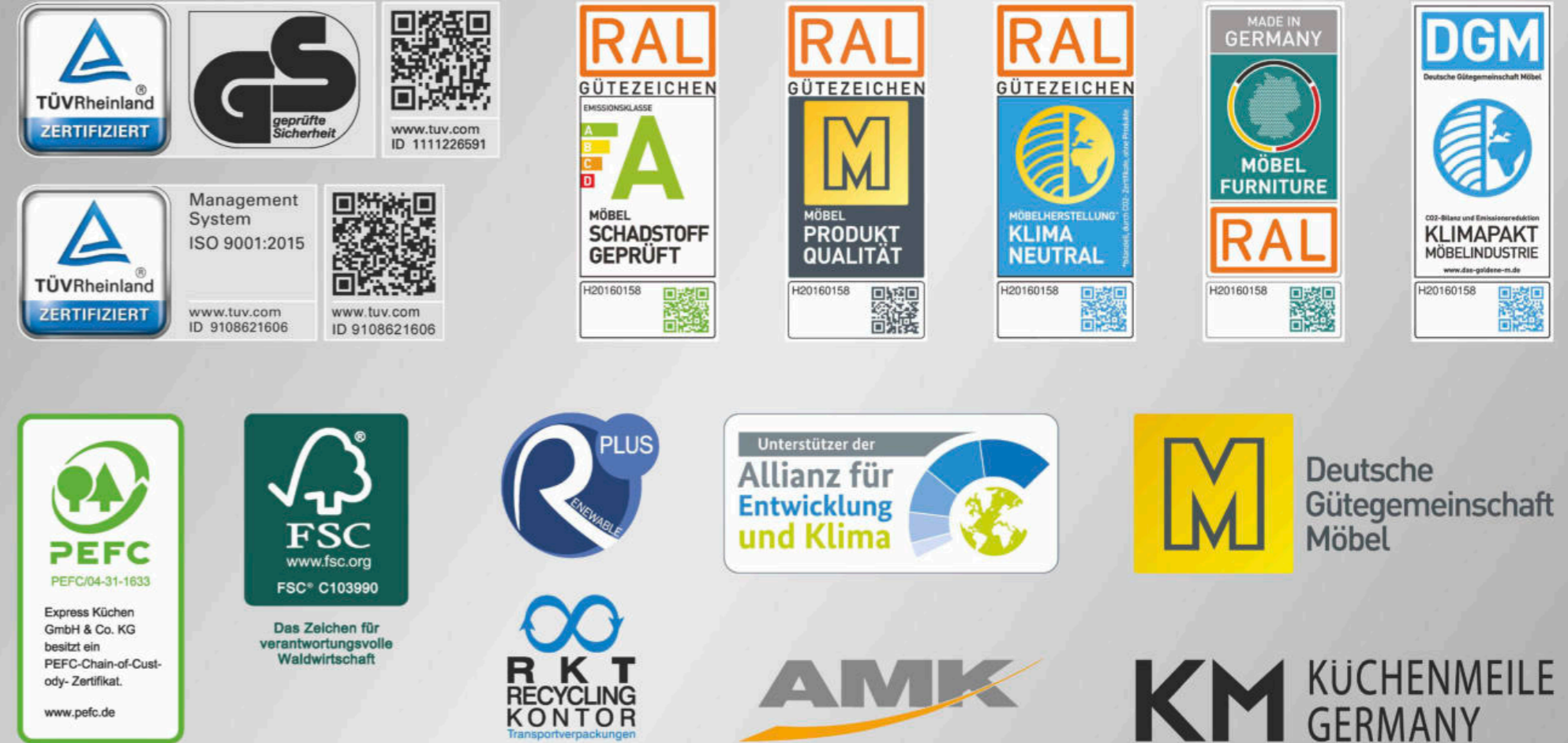
With more than 32 fronts and just as many worktops, you have a whole range of combinations to choose from – from the classic to the modern. Add in a wide range of handles and well-considered lighting concepts, you can create a kitchen design that suits your style perfectly.



## Reliability, right from the start.

Our many years of experience and certified processes form the basis for our reliably high level of quality. With a reliable service, we accompany you through each step – from the initial planning to the final installation of your kitchen.

# Certifications



OWN WORKTOP FACTORY

ESTABLISHED IN  
RAPIDLY GROWING

2010

550

KITCHENS PRODUCED PER DAY

MADE IN GERMANY

16.000 m<sup>2</sup>  
PRODUCTION SPACE

OVER

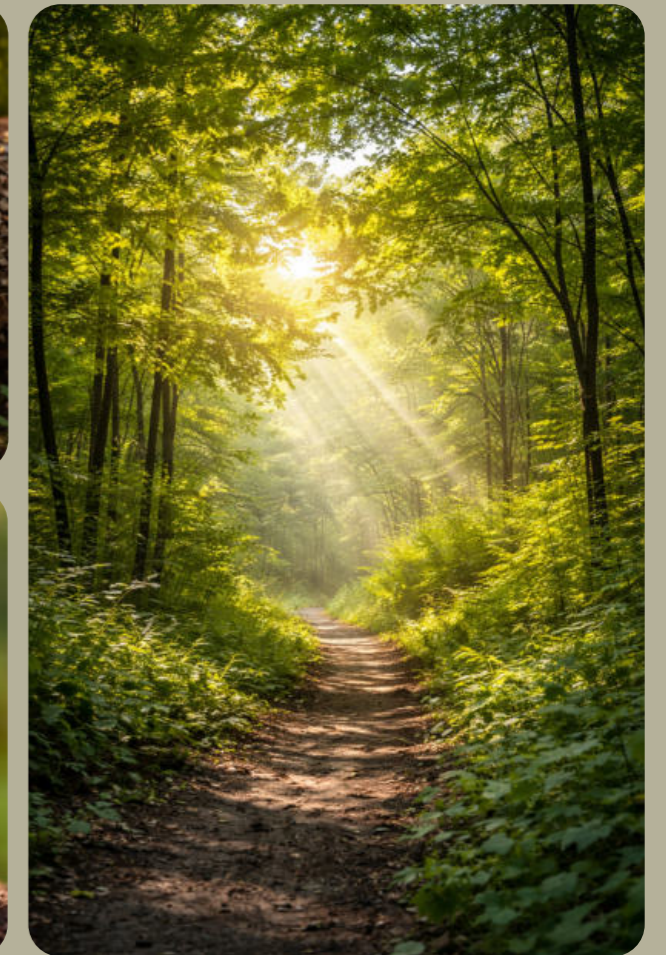
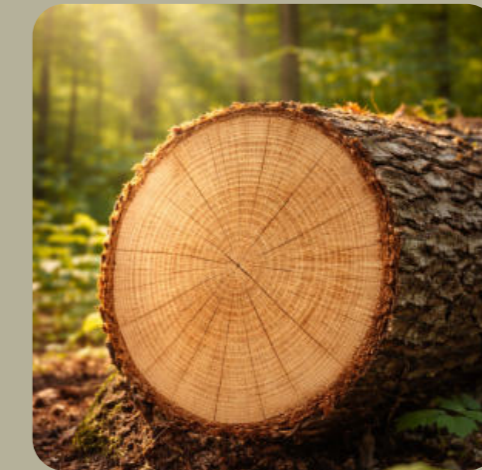
63

EXPORT  
COUNTRIES  
WORLDWIDE

PART OF THE  
NOLTE GROUP

## Sustainability at Express Küchen

At Express Küchen, sustainability is not at odds with speed and efficiency - on the contrary: we believe that sustainable business can only succeed if we firmly integrate ecological and social responsibility into our processes. That's why we take a holistic and practical approach to sustainability - from the resource-saving use of materials and short transportation routes to fair working conditions throughout the entire supply chain.



## THOMPSON HUNTER PROJECT UK

A glimpse into our kitchen project at the Lanark Road development, a 50-unit flatted scheme designed for modern living. Each kitchen has been thoughtfully crafted to combine practicality with contemporary style, delivering spaces that are both functional and visually striking. The use of light grey kitchen fronts, paired with warm wooden accents,

creates a sophisticated contrast that enhances the overall aesthetic while maintaining a welcoming feel. Completed in 2024, all 50 kitchens reflect a consistent standard of quality and design, tailored to elevate everyday living.



8

Country

**UNITED KINGDOM**

City

**EDINBURGH**

Number of Kitchens

**50**

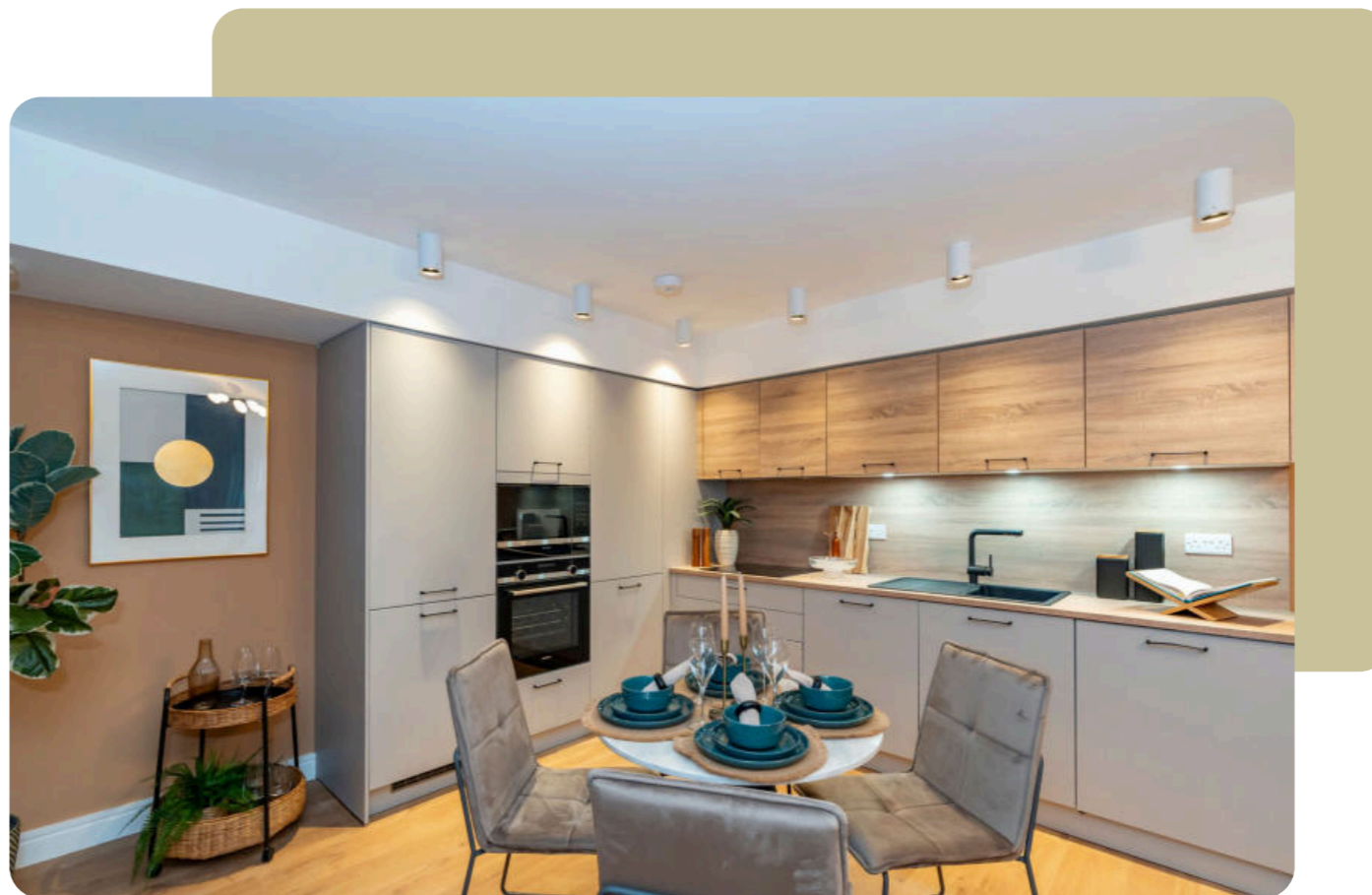
Programme

**PLAN / CLEAN**

Year

**2024**

# UNITED KINGDOM



9

## WILMOT CLOSE – REGAL HOMES

These four stunning new builds located in the desirable location of Bishopstoke. The houses portray modern-day living with their carefully designed accommodation.

The houses portray modern day living with their carefully designed accommodation. Comprising of a beautiful family kitchen/entertaining area and lounge.

Country

**UNITED KINGDOM**

City

**BISHOPSTOKE, HANTS**

Number of Kitchens

**12**

Programme

**PLAN / MOON**

Year

**2019**

# SEQUOIA MEADOWS

Sequoia Meadows is located in Jackton, a vibrant new community on the outskirts of East Kilbride in Lanarkshire, Scotland. This semi rural haven offers families peace and tranquillity whilst still being an easy commute to Glasgow. Benefitting from a new purpose built primary school this 173 plot development has been very popular with families and downsizers looking to enjoy the wide range of local amenities.



# UNITED KINGDOM

Country

**UNITED KINGDOM**

City

**GLASGOW**

Number of Kitchens

**173**

Programme

**CLEAN / STAR**

Year

**2025**

## TURNBERRY HOMES YOKER RIVERFRONT

The Yoker Riverfront project boasts a waterside location on the banks of the River Clyde, just outside Glasgow. This 157 plot development includes a mix of spacious houses and contemporary apartments so is a perfect fit for all lifestyles. The development is adjacent to the newly opened Renfrew Bridge that connects the Yoker area to Renfrew ensuring excellent links to Glasgow city and the surrounding areas.



# UNITED KINGDOM



Country

UNITED KINGDOM

City

GLASGOW

Number of Kitchens

157

Programme

CLEAN / BASE

Year

2024

## FRESH WHARF

The contractor has supplied kitchens to the first phase of this large development in Barking, Central London, using the BASE and MOON ranges in Systemline and creating timeless modern kitchens which will remain on trend and last for years to come.



# UNITED KINGDOM



Country

**UNITED KINGDOM**

City

**LONDON**

Number of Kitchens

**529**

Programme

**BASE / MOON / STAR**

Year

**2020**

# HIGHCROFT WALLINGFORD BY ST

Highcroft has now launched the initial release of homes situated on the Boulevard, including a stunning collection of 2, 3 and 4-bedroom houses inspired by traditional architecture and complemented by modern interior design fit for every aspect of life. There are almost 300 homes being built on this development. Expansive green open spaces are carefully crafted throughout the development with village ponds and beautiful landscaping. All of this only a short walk from the historic market town of Wallingford and the River Thames in South Oxfordshire.

Country

**UNITED KINGDOM**

City

**WALLINGFORD**

Number of Kitchens

**100**

Programme

**MOON / HOME**

Year

**2020 – 2021**

# UNITED KINGDOM



## WYNDHAM MEWS – LAMBERTS LANE – METIS HOMES

MODERN HOME TRADITIONAL VALUES  
20 bespoke luxury homes in the heart  
of West Sussex, England.  
Wyndham Mews living spaces are de-  
signed with generosity in mind, giving you  
and your family space to grow, combin-  
ing thoughtful attention to detail with  
high-quality materials to withstand the  
rigours of life. Kitchens perfectly blend  
form and function to create a workspace  
that is the hub of the home, while bath-  
rooms and en suites are elegant havens  
of luxury in which to wash away the cares  
of the world. Set against the backdrop  
of Cowdray Heritage site, Midhurst has  
become a favoured destination for mod-  
ern living.

Country

**UNITED KINGDOM**

City

**SUSSEX**

Number of Kitchens

**20**

Programme

**HOME**

Year

**2019 / 2020**



**UNITED KINGDOM**



## ROCHESTER RIVERSIDE

A large scale projects on the banks of the River Medway.

Riverside Place is an exclusive and invigorating new village community, bursting with life on the banks of the River Medway. It is a unique and ambitious development with contemporary fitted kitchens with integrated appliances, offering all of its residents a wealth of inspiring lifestyle opportunities.



# UNITED KINGDOM

Country

**UNITED KINGDOM**

City

**ROCHESTER KENT**

Number of Kitchens

**372**

Programme

**MOON / STAR**

Year

**2020**

## UK MAIDENHILL

This standout kitchen from the Maidenhill development showcases a seamless blend of modern design and timeless elegance. Featuring a sleek, contemporary layout, high-quality designer finishes, and carefully considered details throughout, it offers both style and functionality in equal measure.

Natural light pours into the space, enhancing its bright and welcoming atmosphere, making it ideal for everything from everyday living to entertaining guests. A truly exceptional space that elevates the heart of the home.



# UNITED KINGDOM



Country

UNITED KINGDOM

City

MAIDENHILL

Number of Kitchens

52

Programme

STAR

Year

2021

## ROOMPOT

The small-scale Roompot Park Eksel is your ideal holiday destination if you like verdant, forested settings. Here you can undertake all kinds of sports and leisure activities in the Bosland nature reserve.



# BELGIUM

Country

**BELGIUM**

City

**HECHTEL-EKSEL**

Number of Kitchens

**121**

Programme

**WIN**

Year

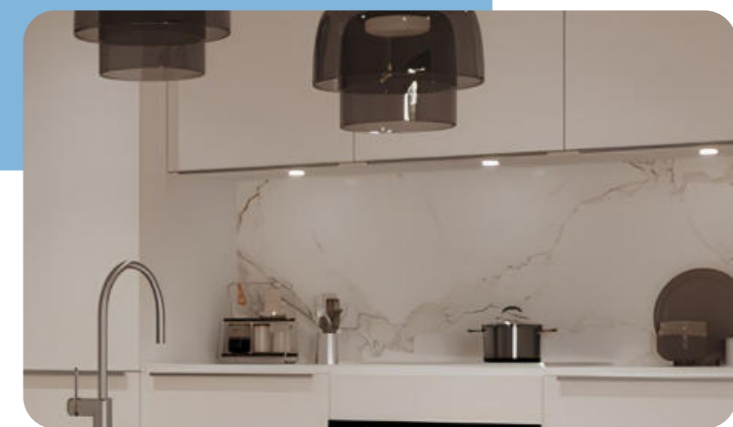
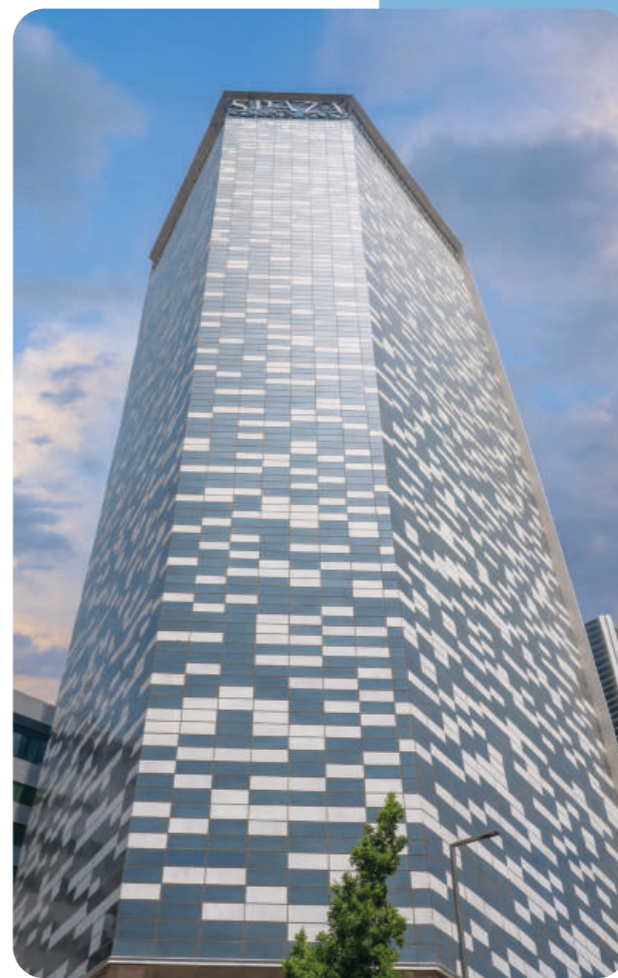
**2020 – 2021**

## CAMPBELL GRAY LIVING

This kitchen project in Abdali Boulevard, Amman, combines a clean white design with an elegant stone worktop, creating a modern and sophisticated look. This project also came with a functional laundry area, the space is designed to maximise both efficiency and style within a contemporary urban setting. This kitchen stands out for its quality finishes and seamless overall aesthetic. It reflects a refined approach to design, perfectly suited to modern city living.



# JORDAN



Country

**JORDAN**

City

**AMMAN**

Number of Kitchens

**42**

Programme

**STAR / WIN**

Year

**2024**

## EWAN TOWER PROJECT

Multiple low-rise towers totalling 122 kitchens. The project involves construction of a commercial and residential building comprising a ground floor and 14 additional floors. First tower was built in 2015 and some are still in construction, since then we have produced a number of kitchens each year for various towers.



# BAHRAIN



Country

**BAHRAIN**

City

**MANAMA**

Number of Kitchens

**122**

Programme

**WIN**

Year

**2017 – 2018**

## NASHMA TOWER

Nasmah is a freehold residential tower from RMK Projects (a division of RM Kooheji & Sons), a proven and trusted developer in Bahrain, for over 15 years. All of its 25 stories consist of 120 apartments of elegant living space, while combining functionality with contemporary design. Every unit has been specifically designed to maximise living space, provide privacy and usher in plenty of daylight and ever-changing views of the seaside and the city.



# BAHRAIN

Country

**BAHRAIN**

City

**MANAMA**

Number of Kitchens

**263**

Programme

**WIN / PLAN / STAR**

Year

**2016 – 2019**

## BREN EDGEWATER

Bren Edgewater is much more than just its well-designed apartments and living spaces. The amenities here ensure a wholesome mix of luxury and convenience for its residents.

BREN brings to you unparalleled comfort combined with a lifestyle that embraces modern trends while providing a quality experience.

This project is situated right off Bangalore's Sarjapur Road and offers seamless connectivity to major locations in Bangalore via high-speed corridors that provide links to the northern, western and eastern parts of the city.



# INDIA

Country

**INDIA**

City

**BANGALORE**

Number of Kitchens

**181**

Programme

**WIN / STAR**

Year

**2018**

## BREN IMPERIA PROJECT

Bren Imperia is gracefully spread over an area of 16 acres of land with 80% open space. Developed by Bren Corporation, this residential project is ideally located at Haralur Road, just off Sarjapur Road, Bangalore. Bren Corporation provides optimum living space, where all generations can enjoy the feeling of home.



# INDIA



Country

**INDIA**

City

**BANGALORE**

Number of Kitchens

**451**

Programme

**STAR**

Year

**2019 – 2020**

## DUNHILL PROJECT

Gitanga Residency (Dunhill Project) is a brand new development in the leafy sub-urbs of Lavington, Nairobi, comprising 48 up-market apartments built on 2 acres to give buyers a green environment of serenity. All finishes are European from Bosch appliances and Express Küchen to Nolte Möbel wardrobes.



# KENYA

Country

**KENYA**

City

**NAIROBI**

Number of Kitchens

**48**

Programme

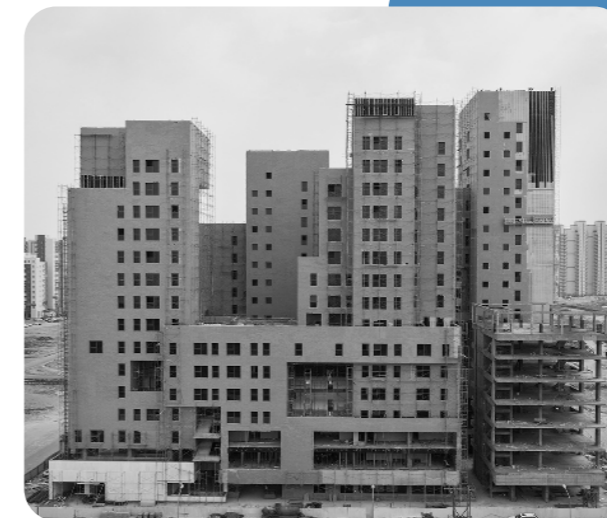
**PLAN**

Year

**2019 – 2020**

## FAWSEC PROJECT SABAH AL-SALEM

Fawsec campus, located in Sabah Al-Salem Area of Kuwait City, has been designed as a group of interconnected midrise buildings, providing residential units (190 one-bedroom apartments), leisure and activity units. The total built-up area is approximately 19,000 sq m and the buildings are finished to the highest standards.



# KUWAIT



Country

**KUWAIT**

City

**KUWAIT CITY**

Number of Kitchens

**191**

Programme

**MOON / HOME**

Year

**2018 – 2019**

## LE SAVOY UNIQUE CONCEPT

Le Savoy boasts 42 apartments and a total of 8247, 60 m<sup>2</sup>. Providing residential living, Le Savoy offers you the opportunity to spend your life with family and friends living in the lap of luxury with cutting-edge architecture and state-of-the-art finishes. Le Savoy offers a distilling experience, serving up only the best in design and details in terms of space, equipment and interiors.

Nestled on the hill of Pointe aux Canoniers on the North Coast of Mauritius Island – Grand Baie, the luxury apartments offer the perfect living experience within a peaceful residential area.



# MAURITIUS

Country

**MAURITIUS**

City

**SUNSET BLVD, GRAND BAIE**

Number of Kitchens

**40**

Programme

**PLAN**

Year

**2020 – 2021**

## EXCLUSIVE VIEWS RESIDENCE

Pointe aux Canonniers in Mauritius showcases a seamless blend of contemporary design and relaxed coastal sophistication. The nine kitchens has been carefully designed to balance functionality with a light, contemporary aesthetic suited to island living. Clean lines, high-quality finishes, and a bright, airy atmosphere define these spaces, creating an inviting heart for every home.



# MAURITIUS



Country

**MAURITIUS**

City

**CITY POINTE AUX  
CANONNIERS**

Number of Kitchens

**9**

Programme

**PLAN**

Year

**2024**

## EXCLUSIVE VIEWS RESIDENCE 4-BEDROOM APARTMENT

This is the second phase of the named project, installing kitchens in a four-bedroom apartment in Mauritius. Situated in Pointe aux Canonnières, the scheme introduces kitchen spaces that respond to both the coastal setting and the needs of everyday living. The four individual layouts focus on clear zoning, generous storage, and intuitive workflows, while maintaining a fresh, understated look. Subtle detailing, durable materials, and a naturally light-filled atmosphere ensure each kitchen feels both welcoming and well-suited to island life.



# MAURITIUS



Country

**MAURITIUS**

City

**CITY POINTE AUX  
CANONNIERS**

Number of Kitchens

**4**

Programme

**STAR**

Year

**2024**

## GEN X COMPOUND

The complex includes 131 apartments of various sizes: 47 studios, 21 medium-sized apartments (1 room and a lounge), and 63 large-sized apartments (2 rooms and a lounge), in which all of them are provided with security services and safety systems. The complex is located in a distinctive area at the centre of the capital Al Riyadh, which makes it easily reachable by main roads. Guests can also benefit from the restaurants, cafés, and all other services within the complex itself.



## AL RAJHI PROJECT CENTRAL REGION

A case in point is our signage project carried out for Al Rajhi Bank Tower, the headquarters of one of the largest financial institutions in the Middle East. Our displays and custom solutions are formulated to satisfy functional requirements and provide aesthetic appeal. Based on a linear concept, Flex digital solutions are intended to meet our client's communication needs in keeping with the style of interior design. Our designers embrace the challenge of creating harmony between hi-tech products and the surrounding elements, such as materials, and interior finishes and architectural style. It comprises four cores, which shield the crystalline glass tower from the worst of the Middle East weather.

Country

**KSA**

City

**RIYADH**

Number of Kitchens

**58**

Programme

**WIN / STAR**

Year

**2018**

# KINGDOM OF SAUDI ARABIA

## DYNASTY RESIDENCES PROJECT

The first ever integrated development project that promises to blend the regal grandeur of an ancient kingdom with modern contemporary city living brought about by world-class architectural designs. Dynasty Residence comprises 24 one-bedroom apartments, 23 two-bedroom apartments, 37 three-bedroom apartments, and 5 four-bedroom duplex-style sky villas for the first time in Sri Lanka. It also includes 4 penthouses with their very own private gardens with golf putting and entertainment areas opened to the sky, designed with utmost creativity and practicality, while benefiting from walk-in wardrobes, modern amenities, dry & wet kitchen concept and contemporary bathrooms replete with panoramic mountain & river views.

Country

**SRI LANKA**

City

**KANDY, COLOMBO**

Number of Kitchens

**113**

Programme

**STAR**

Year

**2016**

# SRI LANKA



## ICONIC GALAXY PROJECT

Discover this landmark, 33-storey residential tower that offers more lifestyle amenities than any comparable residence. This BOI approved project is located at Sri Lanka's leading investment destination. The primary location of Iconic Galaxy will make day-to-day travelling easy for the residents.

Country

**SRI LANKA**

City

**COLOMBO**

Number of Kitchens

**249**

Programme

**WIN / PLAN / STAR**

Year

**2020 – 2021**

## XINYA PROJECT

The construction plan was to reflect the old-style Xinfu approach to life in the local area. It provides homes with 4 to 5 rooms. Both households living side by side and community living. Room types with lifts are available. Located in Huo Alley, Shenlin South Road, Daya City, the surrounding environment is residential, the environment is simple and quiet. The construction project takes "swap house" as the main positioning, and the whole building is planned with suites to meet the needs of three generations living in the same home. The project uses imported building materials and equipment materials, such as imported German Express Küchen products.



# TAIWAN

Country

**TAIWAN**

City

**TAIPEI**

Number of Kitchens

**18**

Programme

**WIN**

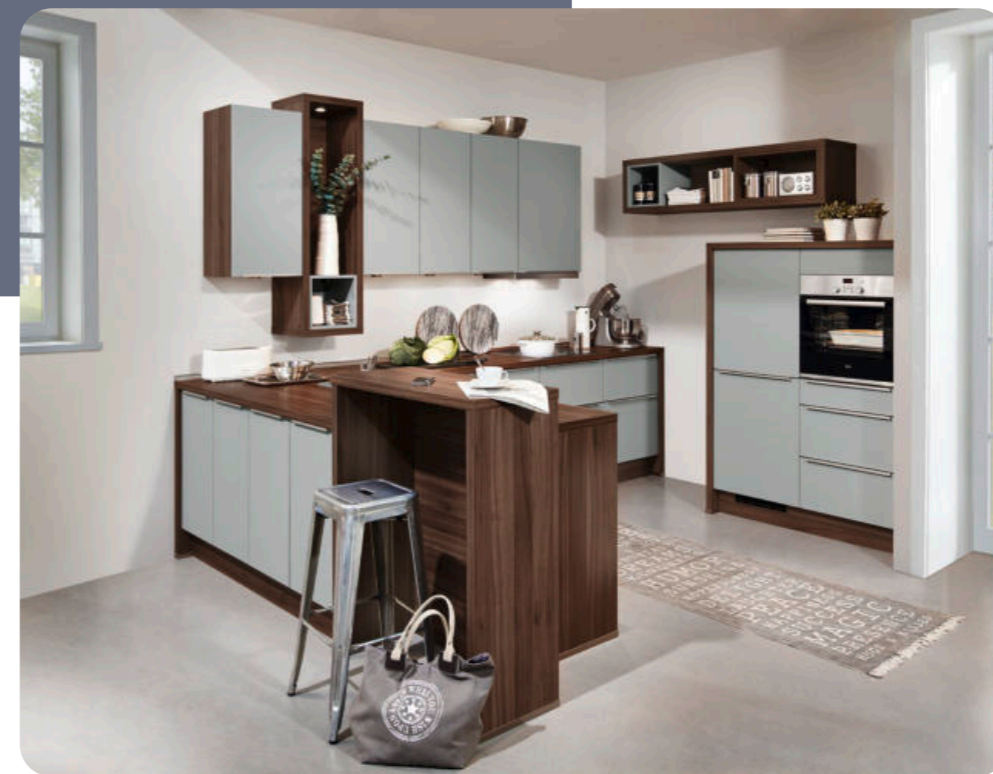
Year

**2018**

## CAPRICORN TOWER

Capricorn Tower is a token of luxury sitting on Sheikh Zayed Road facing the Dubai International Financial Centre. A prime location for executive living, Capricorn Tower comprises a collection of 90 two, three and four-bedroom apartments, designed to the highest of standards with only the best of finishes.

# UNITED ARAB EMIRATES



## CAPITAL VIEW PROJECT

Capital Views is a mixed-use building located in near ADNEC, Abu Dhabi, UAE. The project is part of the Capital Center mixed-use development and will include the construction of 2 commercial and residential buildings composed of 24 storeys and a total of 642 residential units, spreading over land area of 10000 sq m and a built-up area of 90,000 sq m. It will have 319 residential apartments and 323 serviced apartments and other related amenities.

Country

**UNITED ARAB EMIRATES**

City

**ABU DHABI**

Number of Kitchens

**641**

Programme

**PLAN**

Year

**2020 – 2021**

Country

**UNITED ARAB EMIRATES**

City

**DUBAI**

Number of Kitchens

**88**

Programme

**MOON**

Year

**2018**

# INTERIOR AND OPTIONS



The Advantage pull-out system impresses. Oil-damped drawers and pull-outs with all-round rail (ATR) are supplied as a full pull-out with damping as standard.



Colour coordinated cutlery inserts and anti-slip mats give the new drawer system an extra upgrade.



Interior drawers help to keep perfect order, making sure everything is in sight and easily to hand. Whether kitchen utensils or provisions.



With the Advantage Glas equipment the drawers get an exclusive design and ensure a comfortable stocking of your kitchen utensils.



Wall units are available with folding doors, floating or folding flaps for user-friendly barrier-free access.



An LED ring light combines modern design with functional lighting and smart home compatibility. It's a stylish option for enhancing interiors while offering customisable light settings to suit any atmosphere.



The cutlery inserts in real oak for drawers and inner drawers are available in 2 sizes with depthwise partitions for pull-outs and interior pull-outs.



A waste bin with full pull-out ensures easy access and convenient handling. The smooth extension allows for efficient waste disposal while keeping the kitchen organized and tidy.



With a larger pull out unit you'll find what you're looking for in moments. Optionally also with anti slip mats.



A wall unit with a lift door offers a modern, space-saving solution with easy access. Its clean design and smooth opening mechanism make it both practical and stylish for contemporary interiors.



A housing unit for an integrated cooker hood with built-in spice racks combines functionality and smart storage. It keeps your kitchen organized while seamlessly blending the hood into the overall interior design.



The "LE MANS" corner unit maximizes space with swing-out rotating shelves, ensuring easy access and efficient storage.

## UTILITY ROOM - SMART SPACE ORGANISATION



Hallway units in heights of 1950, 2100 and 2250 mm with one clothes rail can accommodate many items of clothing. Alternative with one interior pull-out drawer for small utensils.



A laundry basket shelf offers a practical storage solution, keeping laundry organized and easily accessible while maintaining a clean, tidy look.



The larder unit for shoes is available in heights of 1950, 2100 and 2250 mm. It provides a generous amount of storage space and comes with a depth-reduced bottom panel for air circulation.



Base units for washing machines and dryers include a pull-out with a front height of 450 mm. (Version GGWA60-46-A)



The base unit with front pull-out and a metal container with a lid will optionally hold a 40-l recycling bag.



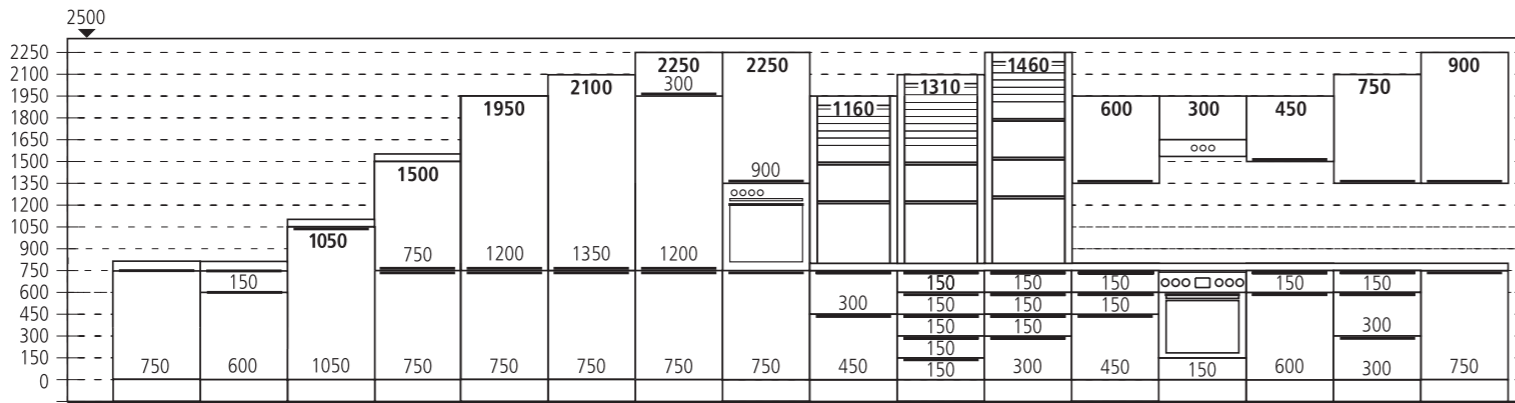
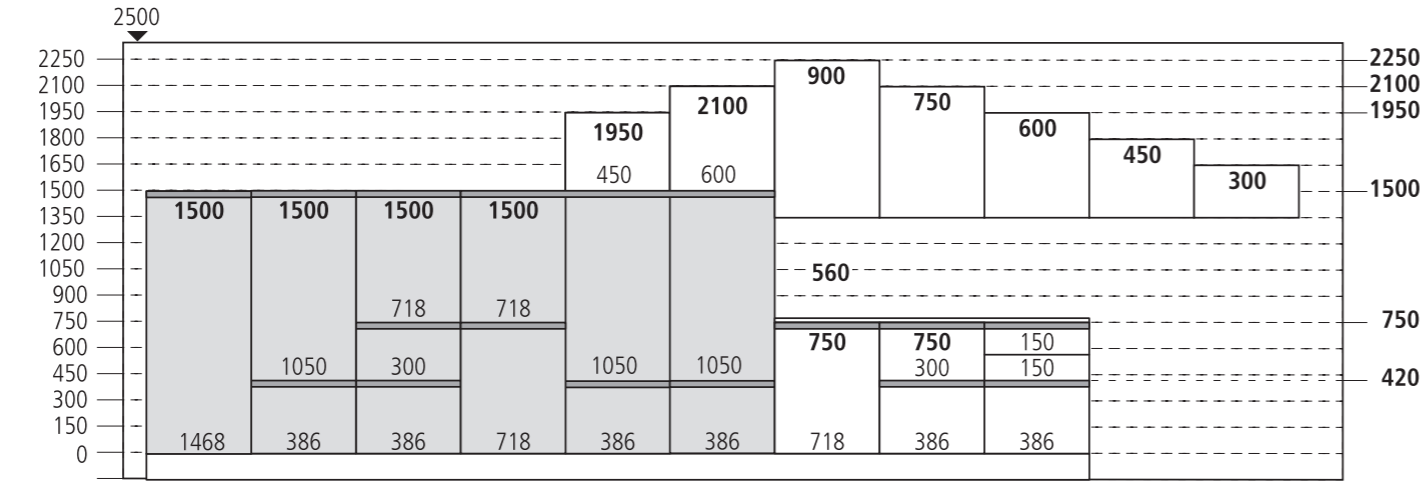
Larder units in heights 1950, 2100 and 2250 mm have 3 supports to hold up to 6 bottle crates.



# SYSTEMLINE

The SYSTEMLINE range represents Express Küchen's handleless kitchen concept, designed to meet the demand for modern, clean, and functional living spaces. Combining contemporary aesthetics with practical usability, the range offers streamlined kitchen solutions that are easy to plan and install. As part of a broader portfolio produced entirely in Germany, SYSTEMLINE reflects the company's commitment to quality, reliability, and efficiency.

Available in a variety of finishes, including matt, textured, and high-gloss surfaces, the range can be adapted to different market preferences and project requirements. It is particularly suited for large-scale international projects, where consistency, cost-effectiveness, and fast production times are essential. With its strong value-for-money positioning, SYSTEMLINE delivers a balance between modern design and affordability, making it attractive to a wide target group in both retail and project business.



## Think Inside the Box.

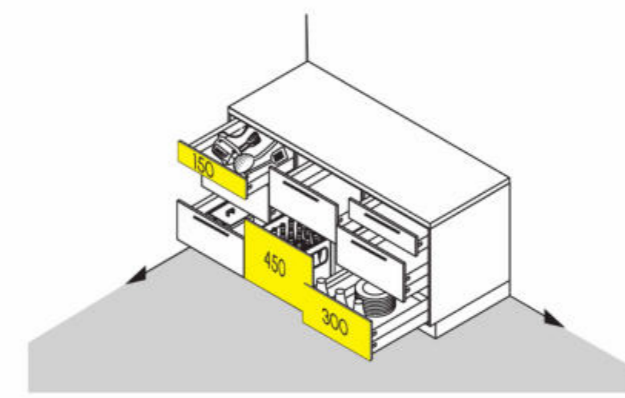
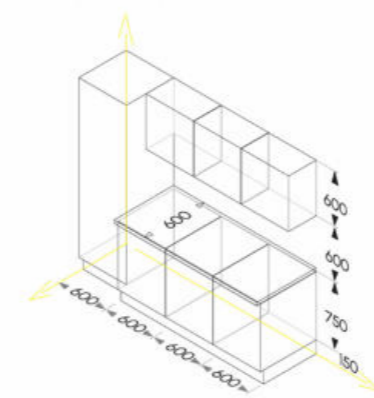
Kitchen planning made easy with **SYSTEM<sup>15</sup>**

**Intelligent interior organisation**  
Colour-matched anti-slip mats, cutlery trays, and flexible sectioning for a cohesive finish.

**Perfect use of storage space**  
Optimised layouts that maximise every cm.

**Designed to suit each project**  
Flexible working heights with five wall unit and plinth options available.

Using just a pen and squared paper, our intuitive 15 x 15 cm grid system offers **maximum design flexibility** and typically **5% more storage space** than traditional systems.

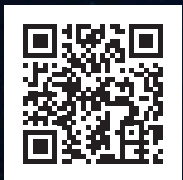


# SYSTEM 15

System 15  
Kitchen planning made easy!

- innovative interior organisation  
colour matched anti-slip mats, cutlery trays and longitudinal / crosswise sectioning, giving an overall harmonious look
- perfect use of storage space  
optimal use of space and layout
- choice of wall units and working heights  
perfect adjustment according to your requirements, made possible due to 5 different wall units and plinth heights

# SYSTEM<sup>15</sup>



**EXPRESS KÜCHEN GmbH & Co. KG**

Am Mühlenbach 1, 49328 Melle

☎ +49 (0) 5226 5942-0

☎ +49 (0) 5226 5942-4119

✉ [info@express-kuechen.de](mailto:info@express-kuechen.de)

**EXPRESS**<sup>®</sup>  
KÜCHEN

